

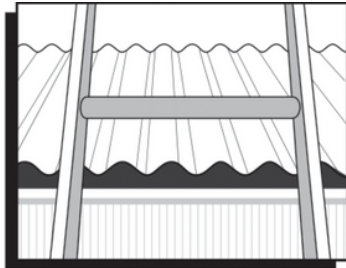
# LOCK JAW

## Ladder Grip

### INSTRUCTIONS FOR USE

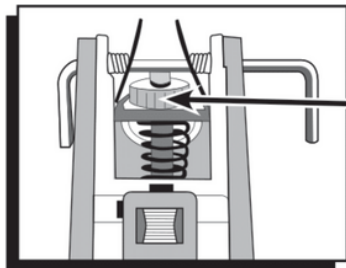
#### IMPORTANT - PLEASE READ BEFORE USE

- This product is a ladder accessory.
- When using this product apply all safety procedures normally associated with the safe use of a ladder.
- Always use two hands to open the spring loaded handle. Uncontrolled release of the spring loaded handle can cause injury.
- Do not use this product if the structural integrity of a gutter is in doubt.
- Inspection shall be made by the user immediately before and after each use for:
  - Loose bolts and screws
  - Cracks in the plastic components of the product
- Do not use the product if it has been damaged in any way.
- The product requires the jaws to be clamped under the lip of a gutter and is therefore not intended for use on plastic gutters.
- Many telescopic ladders have small diameter rails. Only use product on telescopic ladders where the sliding bar assembly can be securely wound down onto the ladder rail and secured along the side of the ladder rail.
- Please perform a check and tag exercise on the product every 6 months or 12 months depending on extent of usage.
- We are here to help with any questions you have about the product. Please contact us at [sales@lockjawladdergrip.com.au](mailto:sales@lockjawladdergrip.com.au)



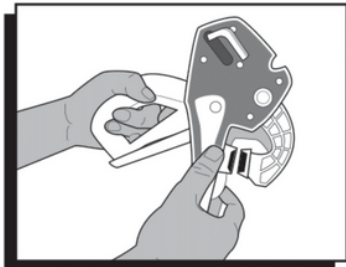
#### STEP 1

Place ladder against the gutter leaving clearance between rungs to position the Lock Jaw Ladder Grip.



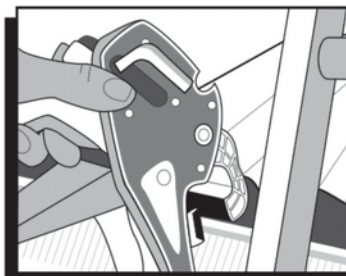
#### STEP 2

Raise the adjustment knob to ensure the bar assembly is near the fully raised position. The bar can be located down against the ladder rail once the device has been clamped to the Gutter



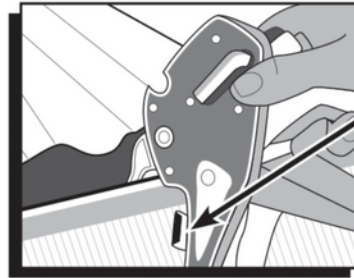
#### STEP 3

Before climbing the ladder, use two hands to open handle. Push safety lock forward with thumb while pulling trigger to release handle. Then clip the device to your belt before climbing ladder.



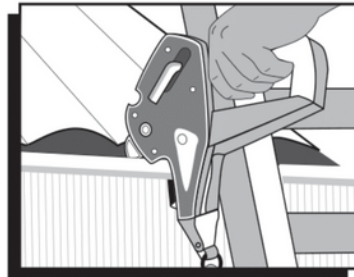
#### STEP 4

With handle in the open position locate the device's jaws over the gutter with the bar located over the ladder rail. Device should be located firmly against ladder rail.



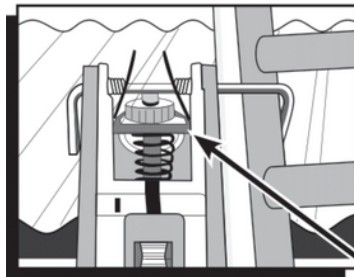
#### STEP 5

Ensure that the adjustable jaw or curved jaw fits snugly under gutter lip. This minimises twisting of the device when in use.



#### STEP 6

Push the handle down with the palm of your hand to lock the device. There is no need to depress the handle trigger assembly when closing the handle. A distinct "clicking" sound should be heard as the handle locates into the body of the product. With the handle in the closed position pull lightly against the handle (without depressing the trigger) to ensure that the handle is locked in the closed position.



#### STEP 7

Using the adjustment knob locate the bar assembly down firmly onto the ladder rail then spread spring loaded locking tabs to slide bar firmly against the side of the ladder rail. Do not use product if bar assembly cannot be firmly wound down onto the ladder rail and also secured firmly against the side of the ladder rail.